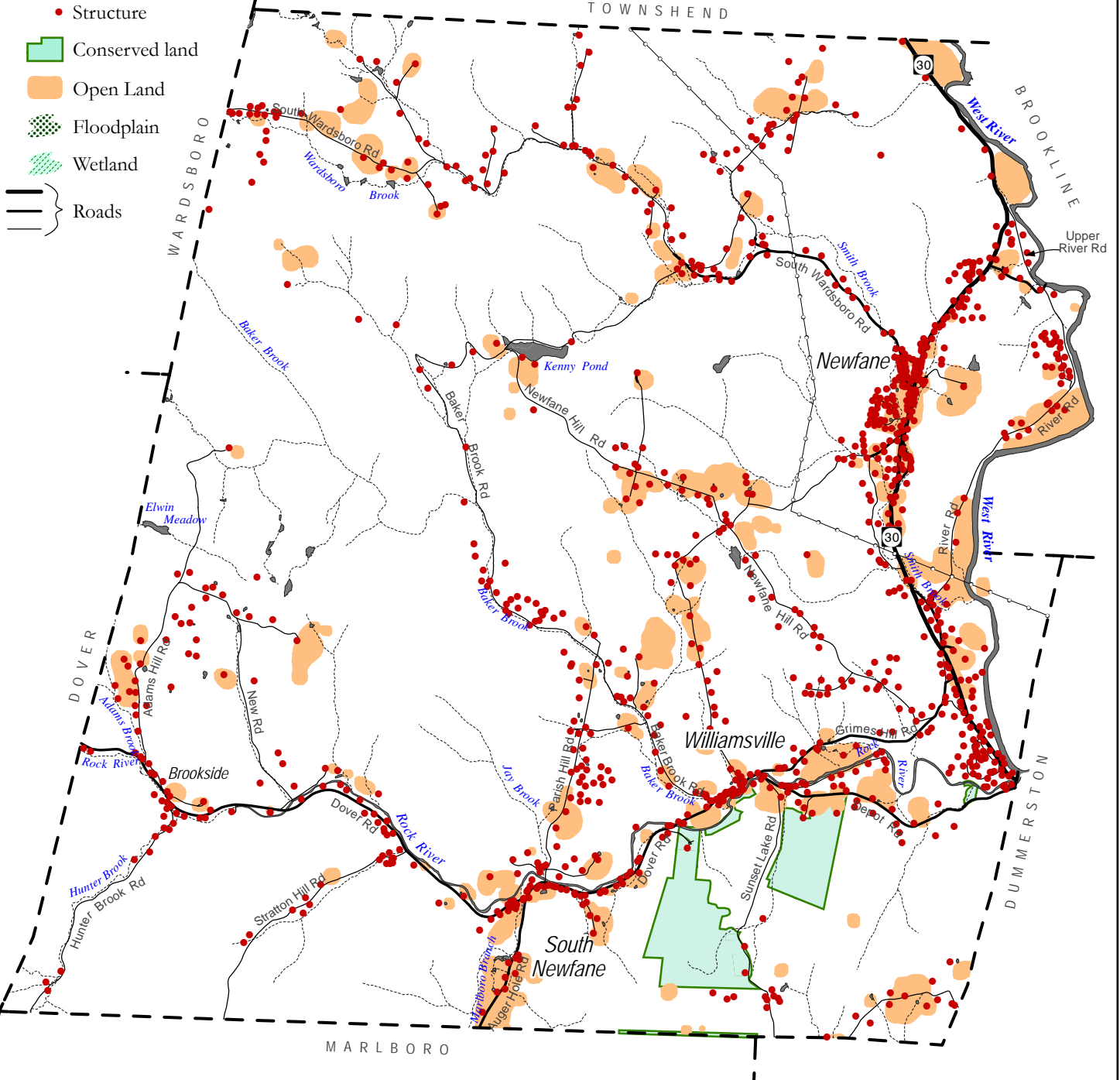


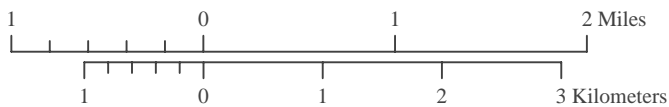
# Existing Land Use

## Town of Newfane, Vermont



**Data sources:**

- Surface waters are from the Vermont Hydrography Dataset.
- Structure locations are from the VGIS data layer ESITE (updated January 2006)
- Open lands were interpreted by WRC staff using various sources including 1:5000 digital orthophotos.



**WINDHAM REGIONAL COMMISSION**  
 139 Main St • Suite 505 • Brattleboro, VT 05301  
 (802) 257-4547 www.rpc.windham.vt.us